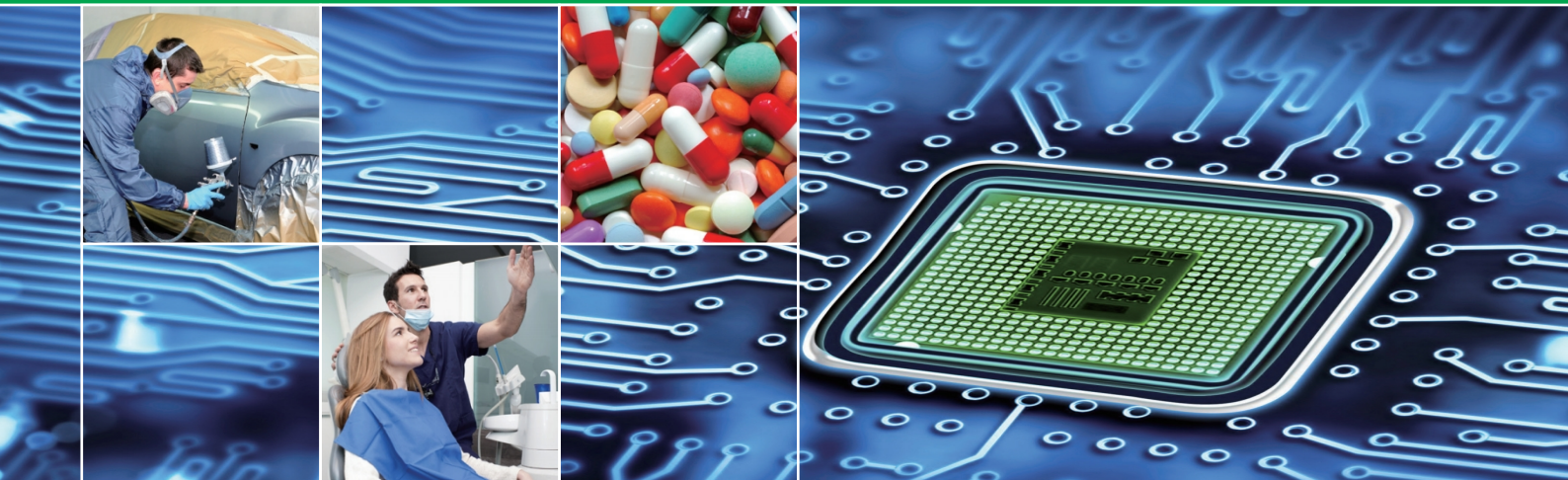


Oil Free Air Compressors

Installed motor power 2.2 - 500 kW/3 - 670 hp
Free air delivery from 0.21 to 86.01 m³/min,
Pressure 2.5 - 10.0 bar



CONTENTS

- 01 OIL FREE SCROLL AIR COMPRESSOR
- 02 DRY TYPE OIL FREE SCREW AIR COMPRESSOR

P01
P03



OIL FREE SCROLL AIR COMPRESSOR

Features and advantages

Mute, clean, energy saving and efficient.

100% oil free (class 0).

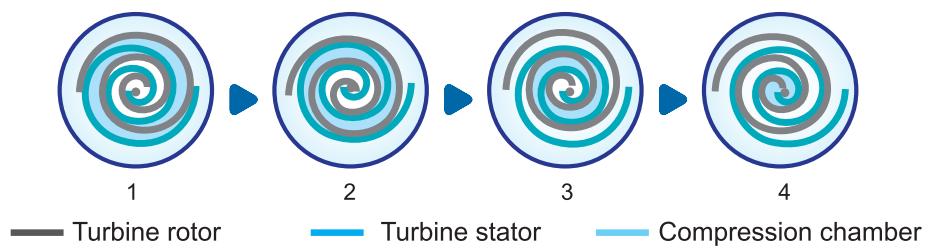
Delivers 11-15% more air compared to similar designs with no additional power.

Better in durability and longevity.



Working principle

The turbine rotor turns in sequence of Picture 1→2→3→4, air is sucked into the space between turbine stator and turbine rotor, the volume of crescent-shaped (in point symmetry) compression chamber gradually decreases, compressed air is discharged through air outlet of central portion.



Technical parameters

Type	Maximum working pressure		Capacity FAD*				Installed motor power		No of air end	Air outlet pipe diameter	Noise Level**	Dimensions(mm)			Weight
			50 Hz		60 Hz							L	W	H	
	bar(g)	psig	m³/min	cfm	m³/min	cfm	kW	hp	Units	inch	[dB(A)]				kg
DWW-2	7.0	102	0.25	9	0.24	8	2.2	3	1	Rc1/2"	65	920	720	940	230
	8.0	116	0.24	9	0.23	8	2.2	3		Rc1/2"	65	920	720	940	230
	10.0	145	0.22	8	0.21	7	2.2	3		Rc1/2"	65	920	720	940	230
DWW-3	7.0	102	0.40	14	0.43	15	3.7	5	1	Rc1/2"	65	920	720	940	230
	8.0	116	0.39	14	0.40	14	3.7	5		Rc1/2"	65	920	720	940	230
	10.0	145	0.37	13	0.37	13	3.7	5		Rc1/2"	65	920	720	940	230
DWW-5	7.0	102	0.51	18	0.47	16	5.5	7.5	2	Rc1"	68	1150	760	1020	360
	8.0	116	0.48	17	0.46	16	5.5	7.5		Rc1"	68	1150	760	1020	360
	10.0	145	0.44	16	0.42	15	5.5	7.5		Rc1"	68	1150	760	1020	360
DWW-7	7.0	102	0.80	28	0.86	30	7.5	10	2	Rc1"	68	1150	760	1020	360
	8.0	116	0.78	28	0.80	28	7.5	10		Rc1"	68	1150	760	1020	360
	10.0	145	0.74	26	0.74	26	7.5	10		Rc1"	68	1150	760	1020	360
DWW-11	7.0	102	1.20	42	1.26	44	11	15	3	Rc1"	70	1150	760	1400	500
	8.0	116	1.17	41	1.20	42	11	15		Rc1"	70	1150	760	1400	500
	10.0	145	1.11	39	1.10	39	11	15		Rc1"	70	1150	760	1400	500
DWW-15	7.0	102	1.60	56	1.73	61	15	20	4	Rc1"	70	1800	1300	1440	800
	8.0	116	1.56	55	1.61	57	15	20		Rc1"	70	1800	1300	1440	800
	10.0	145	1.47	52	1.47	52	15	20		Rc1"	70	1800	1300	1440	800
DWW-18	7.0	102	2.00	71	2.07	73	18	25	5	Rc1"	72	1930	1270	1340	860
	8.0	116	1.95	69	1.97	70	18	25		Rc1"	72	1930	1270	1340	860
	10.0	145	1.84	65	1.81	64	18	25		Rc1"	72	1930	1270	1340	860
DWW-22	7.0	102	2.40	85	2.53	89	22	30	6	Rc1"	72	1930	1270	1340	900
	8.0	116	2.34	83	2.41	85	22	30		Rc1"	72	1930	1270	1340	900
	10.0	145	2.21	78	2.21	78	22	30		Rc1"	72	1930	1270	1340	900
DWW-30	7.0	102	3.20	113	3.44	121	30	40	8	Rc1-1/4"	75	2030	1260	1720	1200
	8.0	116	3.12	110	3.28	116	30	40		Rc1-1/4"	75	2030	1260	1720	1200
	10.0	145	2.95	104	3.01	106	30	40		Rc1-1/4"	75	2030	1260	1720	1200
DWW-37	7.0	102	4.00	141	4.25	150	37	50	10	Rc1-1/2"	75	2030	1260	2100	1420
	8.0	116	3.89	138	4.05	143	37	50		Rc1-1/2"	75	2030	1260	2100	1420
	10.0	145	3.68	130	3.72	131	37	50		Rc1-1/2"	75	2030	1260	2100	1420

*) FAD in accordance with ISO 1217 : 2009, Annex C: Absolute intake pressure 1 bar (a), cooling and air intake temperature 20 °C

**) Noise level as per ISO 2151 and the basic standard ISO 9614-2, operation at maximum operating pressure and maximum speed; tolerance: ± 3 dB(A)

Specifications are subject to change without notice.

DRY TYPE OIL FREE SCREW AIR COMPRESSOR

Features and advantages



01

State-of-the-art Screw Element

- Original Germany GHH air end
- Double stage compression
- Superior Sweden SKF element bearings



02

Advanced Touch Screen Controller and Monitoring System

- Overall system performance status with pro-active service indications, alarms for malfunctions and safety shutdowns
- All monitoring and control functions via one interface, multi-language LCD available.
- Wide communication possibilities



03

Electrical Components

Schneider electrical elements with original package from France, safe and reliable.



04

Stainless Steel Oil Pipe and Air Pipe

- High temperature resistant (400°C=752°F) and low temperature resistant(- 270°C= - 518°F), high pressure resistant
- Ultra-long life (80 years), completely leak free and maintenance free



05

Superior Air Filter

- Superior air filter with two-stage dust removal and filtering system with efficiency of up to 99.9% even in heavy-duty environments
- Extends the service life of the compressor parts and components, ensures high air quality



06

Premium Efficiency Drive Motor

- Premium efficiency Totally Enclosed Fan Cooled (TEFC) IP54/IP55 motor (Class F insulation) protects against dust and chemicals etc.
- Long-term stable operation even in harsh environments up to 55 °C (131 °F)

Technical parameters for 7.0-10.0 bar models

Model	Maximum working pressure		Capacity FAD*				Installed motor power		Cooling Method	Noise level** [dB(A)]	Dimensions(mm)			Weight kg	Air outlet pipe diameter
			50 Hz		60 Hz						L	W	H		
	bar(g)	psig	m ³ /min	cfm	m ³ /min	cfm	kW	hp							
DWW-45	7.0	102	7.07	250	7.16	253	45	60	Air Cooling W-Water Cooling	80	2500	1600	2080	2090	R1-1/2"
	8.0	116	7.03	248	6.48	229	45	60		80	2500	1600	2080	2090	R1-1/2"
	10.0	145	5.51	194	5.37	189	45	60		80	2500	1600	2080	2090	R1-1/2"
DWW-55	7.0	102	9.37	331	8.87	313	55	75		80	2500	1600	2080	2600	R1-1/2"
	8.0	116	9.34	330	8.25	291	55	75		80	2500	1600	2080	2600	R1-1/2"
	10.0	145	8.11	286	7.10	251	55	75		80	2500	1600	2080	2600	R1-1/2"
DWW-75	7.0	102	12.72	449	12.60	445	75	100		82	2500	1600	2080	2800	DN50
	8.0	116	12.69	448	12.34	436	75	100		82	2500	1600	2080	2800	DN50
	10.0	145	11.58	409	10.43	368	75	100		82	2500	1600	2080	2800	DN50
DWW-75W	7.0	102	12.72	449	12.60	445	75	100		82	2300	1600	1790	2850	DN50
	8.0	116	12.69	448	12.34	436	75	100		82	2300	1600	1790	2850	DN50
	10.0	145	11.58	409	10.43	368	75	100		82	2300	1600	1790	2850	DN50
DWW-90	7.0	102	13.66	482	14.62	516	90	120		82	2500	1600	2080	3000	DN50
	8.0	116	13.64	482	14.60	515	90	120		82	2500	1600	2080	3000	DN50
	10.0	145	12.64	446	12.86	454	90	120		82	2500	1600	2080	3000	DN50
DWW-90W	7.0	102	13.66	482	14.62	516	90	120	82	2300	1600	1790	2850	DN50	
	8.0	116	13.64	482	14.60	515	90	120	82	2300	1600	1790	2850	DN50	
	10.0	145	12.64	446	12.86	454	90	120	82	2300	1600	1790	2850	DN50	
DWW-110	7.0	102	19.16	676	17.50	618	110	150	85	2800	1800	1860	3300	DN65	
	8.0	116	19.13	675	17.47	617	110	150	85	2800	1800	1860	3300	DN65	
	10.0	145	16.72	590	15.41	544	110	150	85	2800	1800	1860	3300	DN65	
DWW-110W	7.0	102	19.16	676	17.50	618	110	150	85	2800	1800	1860	3300	DN65	
	8.0	116	19.13	675	17.47	617	110	150	85	2800	1800	1860	3300	DN65	
	10.0	145	16.72	590	15.41	544	110	150	85	2800	1800	1860	3300	DN65	
DWW-132	7.0	102	22.63	799	23.29	822	132	175	85	2800	1800	1860	3450	DN65	
	8.0	116	22.60	798	23.27	822	132	175	85	2800	1800	1860	3450	DN65	
	10.0	145	20.28	716	20.46	723	132	175	85	2800	1800	1860	3450	DN65	
DWW-132W	7.0	102	22.63	799	23.29	822	132	175	85	2800	1800	1860	3450	DN65	
	8.0	116	22.60	798	23.27	822	132	175	85	2800	1800	1860	3450	DN65	
	10.0	145	20.28	716	20.46	723	132	175	85	2800	1800	1860	3450	DN65	
DWW-160	7.0	102	27.40	967	27.28	963	160	215	85	2800	1800	1860	3550	DN65	
	8.0	116	27.38	967	27.26	962	160	215	85	2800	1800	1860	3550	DN65	
	10.0	145	23.98	847	26.38	931	160	215	85	2800	1800	1860	3550	DN65	
DWW-160W	7.0	102	27.40	967	27.28	963	160	215	85	2800	1800	1860	3550	DN65	
	8.0	116	27.38	967	27.26	962	160	215	85	2800	1800	1860	3550	DN65	
	10.0	145	23.98	847	26.38	931	160	215	85	2800	1800	1860	3550	DN65	

*) FAD in accordance with ISO 1217:2009, Annex C: Absolute intake pressure 1 bar (a), cooling and air intake temperature 20 °C

***) Noise level as per ISO 2151 and the basic standard ISO 9614-2, operation at maximum operating pressure and maximum speed; tolerance: ±3 dB(A)

****) N/A-Not Available

*****) VSD models are also available

Specifications are subject to change without notice.

Technical parameters for 7.0-10.0 bar models

Model	Maximum working pressure		Capacity FAD*				Installed motor power		Cooling Method	Noise level** [dB(A)]	Dimensions(mm)			Weight kg	Air outlet pipe diameter
			50 Hz		60 Hz						L	W	H		
	bar(g)	psig	m ³ /min	cfm	m ³ /min	cfm	kW	hp							
DWW-185	7.0	102	30.37	1072	31.20	1102	185	250	Air Cooling W-Water Cooling	85	2800	1800	1860	3950	DN65
	8.0	116	30.34	1071	31.04	1096	185	250		85	2800	1800	1860	3950	DN65
	10.0	145	27.34	965	29.16	1030	185	250		85	2800	1800	1860	3950	DN65
DWW-185W	7.0	102	30.37	1072	31.20	1102	185	250		85	2800	1800	1860	3950	DN65
	8.0	116	30.34	1071	31.04	1096	185	250		85	2800	1800	1860	3950	DN65
	10.0	145	27.34	965	29.16	1030	185	250		85	2800	1800	1860	3950	DN65
DWW-200W	7.0	102	34.17	1206	34.82	1229	200	270		88	3100	1900	2200	4500	DN100
	8.0	116	34.14	1205	34.78	1228	200	270		88	3100	1900	2200	4500	DN100
	10.0	145	30.55	1079	28.42	1004	200	270		88	3100	1900	2200	4500	DN100
DWW-220W	7.0	102	36.71	1296	37.35	1319	220	300		88	3100	1900	2200	5000	DN100
	8.0	116	36.66	1295	37.30	1317	220	300		88	3100	1900	2200	5000	DN100
	10.0	145	34.03	1202	31.30	1105	220	300		88	3100	1900	2200	5000	DN100
DWW-250W	7.0	102	43.71	1543	44.27	1563	250	350		90	3100	1900	2200	5200	DN100
	8.0	116	43.66	1542	44.24	1562	250	350		90	3100	1900	2200	5200	DN100
	10.0	145	39.16	1383	37.20	1314	250	350		90	3100	1900	2200	5200	DN100
DWW-280W	7.0	102	47.65	1683	47.25	1668	280	375	92	3400	2200	2200	6400	DN100	
	8.0	116	47.61	1681	47.21	1667	280	375	92	3400	2200	2200	6400	DN100	
	10.0	145	43.58	1539	41.23	1456	280	375	92	3400	2200	2200	6400	DN100	
DWW-315W	7.0	102	52.44	1852	52.30	1847	315	425	92	3400	2200	2200	6700	DN100	
	8.0	116	52.40	1850	52.27	1846	315	425	92	3400	2200	2200	6700	DN100	
	10.0	145	47.53	1678	46.60	1645	315	425	92	3400	2200	2200	6700	DN100	
DWW-355W	7.0	102	56.96	2011	56.84	2007	355	475	92	4060	2000	2500	6800	DN125	
	8.0	116	56.86	2008	56.74	2003	355	475	92	4060	2000	2500	6800	DN125	
	10.0	145	49.98	1765	50.32	1777	355	475	92	4060	2000	2500	6800	DN125	
DWW-400W	7.0	102	67.36	2378	69.55	2456	400	535	92	4060	2000	2500	7200	DN125	
	8.0	116	67.27	2375	69.45	2452	400	535	92	4060	2000	2500	7200	DN125	
	10.0	145	56.65	2000	56.55	1997	400	535	92	4060	2000	2500	7200	DN125	
DWW-450W	7.0	102	78.07	2757	81.66	2883	450	600	92	4060	2000	2500	9000	DN125	
	8.0	116	77.98	2753	N/A	N/A	450	600	92	4060	2000	2500	9000	DN125	
	10.0	145	67.10	2369	69.29	2447	450	600	92	4060	2000	2500	9000	DN125	
DWW-500W	7.0	102	86.01	3037	N/A	N/A	500	670	92	4060	2000	2500	9900	DN125	
	8.0	116	85.92	3034	81.58	2881	500	670	92	4060	2000	2500	9900	DN125	
	10.0	145	77.82	2748	N/A	N/A	500	670	92	4060	2000	2500	9900	DN125	

*) FAD in accordance with ISO 1217:2009, Annex C: Absolute intake pressure 1 bar (a), cooling and air intake temperature 20 °C

**) Noise level as per ISO 2151 and the basic standard ISO 9614-2, operation at maximum operating pressure and maximum speed; tolerance: ±3 dB(A)

***) N/A-Not Available

****) VSD models are also available

Specifications are subject to change without notice.

Technical parameters for 2.5-3.5 bar models

Model	Maximum working pressure		Capacity FAD*				Installed motor power		Cooling Method	Noise level** [dB(A)]	Dimensions(mm)			Weight kg	Air outlet pipe diameter
			50 Hz		60 Hz		kW	hp			L	W	H		
	bar(g)	psig	m ³ /min	cfm	m ³ /min	cfm									
DWL-55-2	2.5	37	15.33	541	14.44	510	55	75	Air Cooling W-Water Cooling	69	2400	1800	1700	2630	DN80
DWL-55-3	3.0	44	12.78	451	10.85	383	55	75		69	2400	1800	1700	2630	DN80
DWL-75-2	2.5	37	19.92	703	20.35	719	75	100		69	2400	1800	1700	2850	DN80
DWL-75-3	3.0	44	16.30	576	15.87	560	75	100		69	2400	1800	1700	2850	DN80
DWL-90-2	2.5	37	26.07	921	26.45	934	90	120		72	2400	1800	1700	2850	DN80
DWL-90-3	3.0	44	19.54	690	19.49	688	90	120		72	2400	1800	1700	2850	DN80
DWL-110(W)-2	2.5	37	33.16	1171	29.90	1056	110	150		72	3000	2000	2000	3450	DN125
DWL-110(W)-3	3.0	44	25.60	904	23.92	845	110	150		72	2400	1800	1700	3000	DN80
DWL-132(W)-2	2.5	37	40.24	1421	40.98	1447	132	175		72	3000	2000	2000	3490	DN125
DWL-132(W)-3	3.0	44	27.23	961	29.43	1039	132	175		72	2400	1800	1700	3100	DN80
DWL-160(W)-2	2.5	37	49.42	1745	49.21	1738	160	215		76	3000	2000	2000	3540	DN125
DWL-160(W)-3	3.0	44	35.75	1262	34.98	1235	160	215		76	3000	2000	2000	3540	DN125
DWL-185(W)-2	2.5	37	55.18	1948	57.17	2019	185	250		79	3000	2000	2000	3640	DN125
DWL-185(W)-3	3.0	44	42.21	1490	44.16	1559	185	250		79	3000	2000	2000	3640	DN125

*) FAD in accordance with ISO 1217:2009, Annex C: Absolute intake pressure 1 bar (a), cooling and air intake temperature 20 °C

**) Noise level as per ISO 2151 and the basic standard ISO 9614-2, operation at maximum operating pressure and maximum speed; tolerance: ±3 dB(A)

***) VSD models are also available

Specifications are subject to change without notice.



P-DINR202207-08 Specifications are subject to change without prior notice.
Never use compressed air as breathing air without prior purification in accordance with local legislation and standards.



Denair Energy Saving Technology (Shanghai) Plc.

No. 6767, Tingfeng Rd., Jinshan District,
Shanghai 201502, China
Tel.: +86 21 3783 1829
Fax: +86 21 6040 5929

info@denair.net
www.denair.net